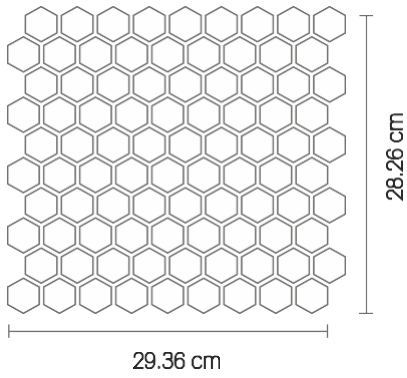


***SIDRONS***

**HEXAGONAL MOSAICS**

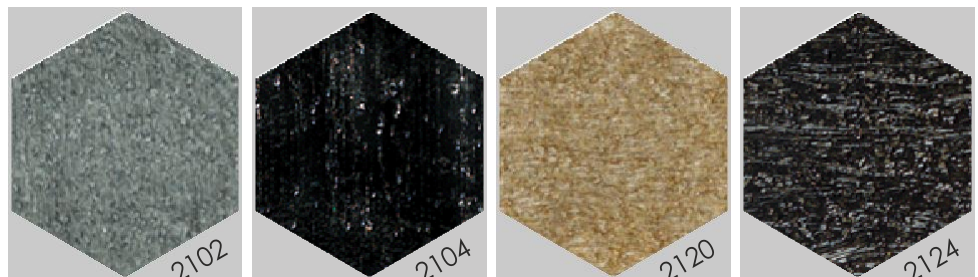
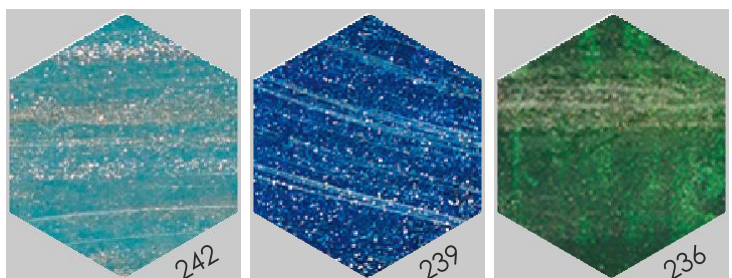
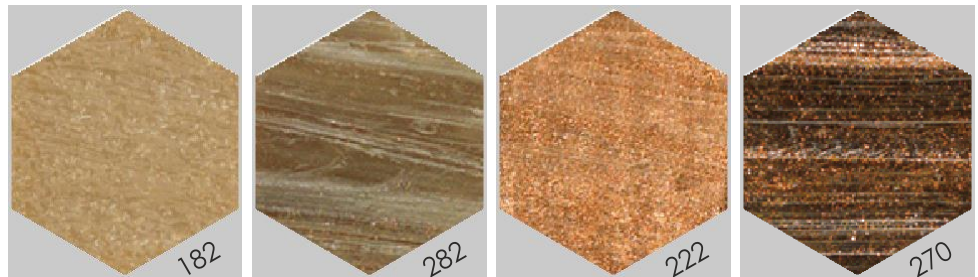
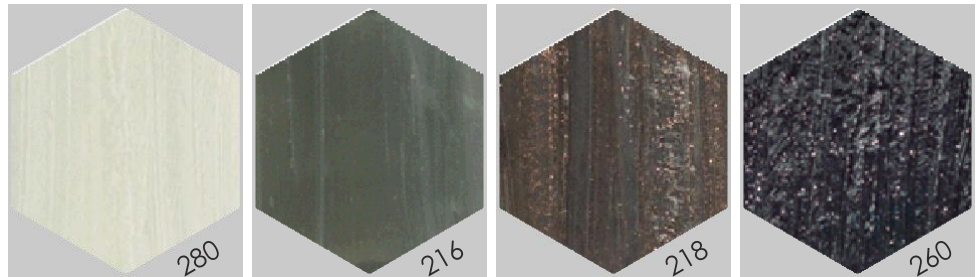
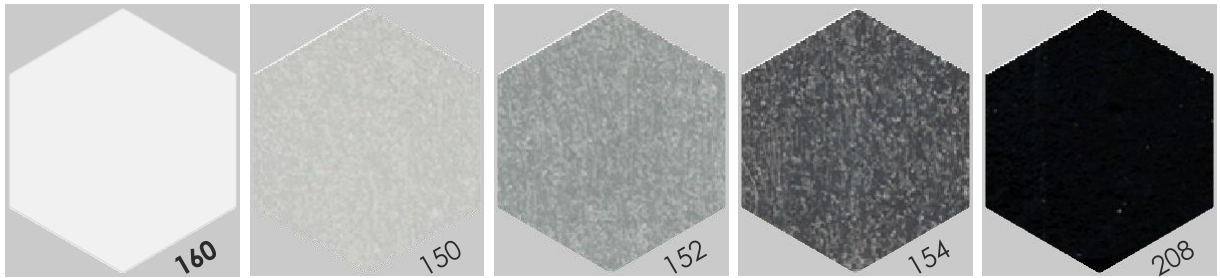


## HEXAGONAL SPECIFICATIONS

These semi-transparent glass mosaic tiles are colored during the melting process and additionally enriched with sparkling enamels and aventurina stone.

Separate mixing achieves the classic veining effect on the surface. Aventurina is an artificial stone produced by melting, at approx. 1200° C of silica sand, copper and color components.

Tile Size	: 3 x 3.5 cm	Modular Size	: 28.26 x 29.36 cm
Thickness	: ~ 5 mm	Sqf	: 0.9 / Sheet
Joint	: ~ 2 mm	Weight	: ~ 0.75 KG / Sheet
Sheets Size	: 29.16 x 31.0 cm	Sheets / Box	: 18 Nos (Paper Support)



*Exclusive*  
**HEXAGONAL**  
3 X 3.5 CM



**SIDRONS**

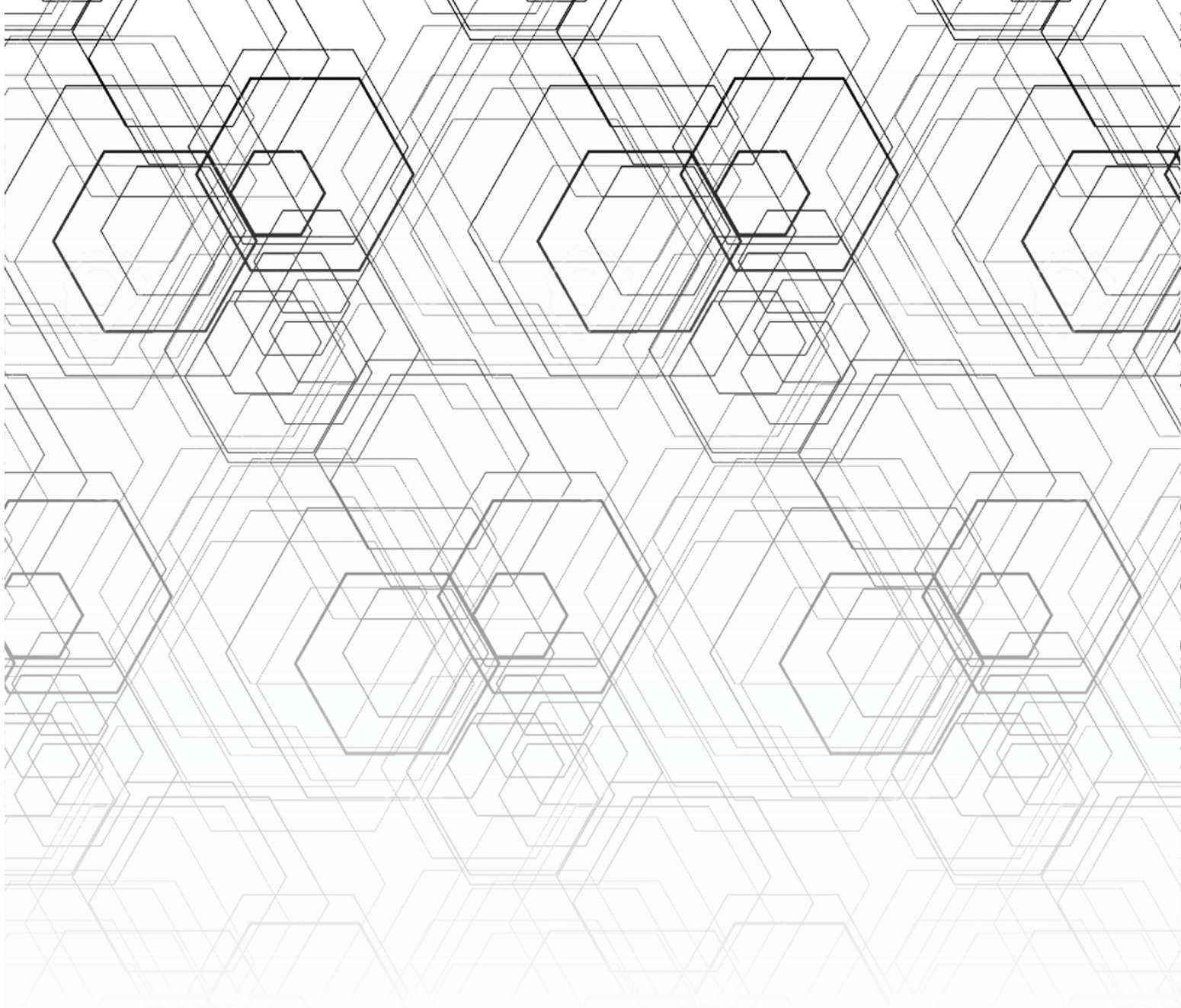
*Exclusive*  
**HEXAGONAL**  
3 X 35 CM



ACTUAL SITE PHOTO  
Colour Code : 270

*Exclusive*





*Thank You*

**Visit us @:  
[www.sidrons.com](http://www.sidrons.com)**